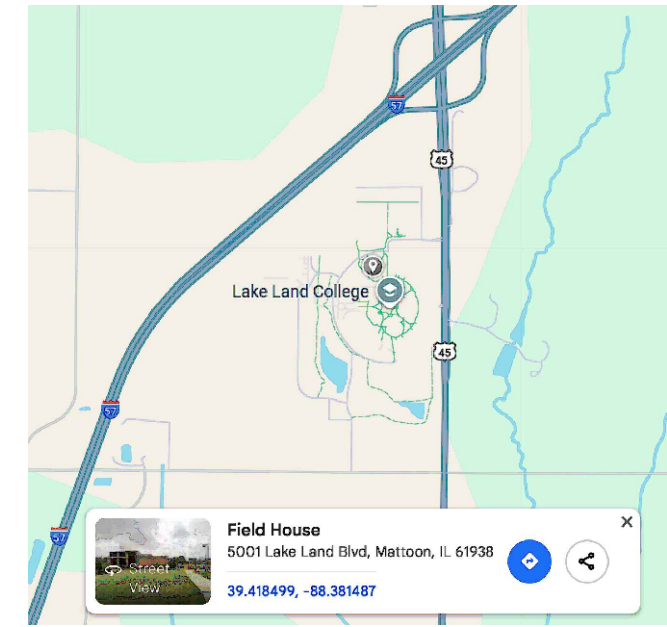


LAKE LAND COLLEGE - FIELD HOUSE

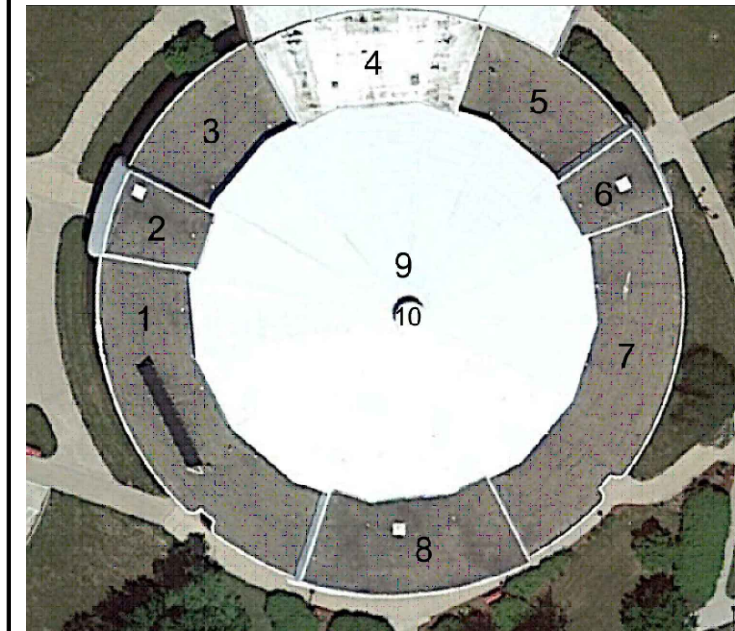
5009 LAKE LAND BOULEVARD
MATTOON, IL 61938



LOCATION MAP



KEY PLAN



DRAWING INDEX

- SHEET 1 - COVER SHEET
- SHEET 2 - GENERAL NOTES
- SHEET 3 - GENERAL NOTES
- SHEET 4 - ROOF PLANS
- SHEET 5 - DETAILS
- SHEET 6 - DETAILS
- SHEET 7 - DETAILS

REVISION:

LAKE LAND COLLEGE - FIELD HOUSE

5009 LAKE LAND BOULEVARD
MATTOON, IL 61938

GARLAND REP: REP NAME

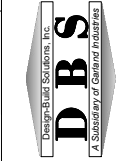
PROJECT NO: 30-ES-240237

DATE: 12/14/2024 DWG BY: FRB CHK BY:



GARLAND / DBS INC.

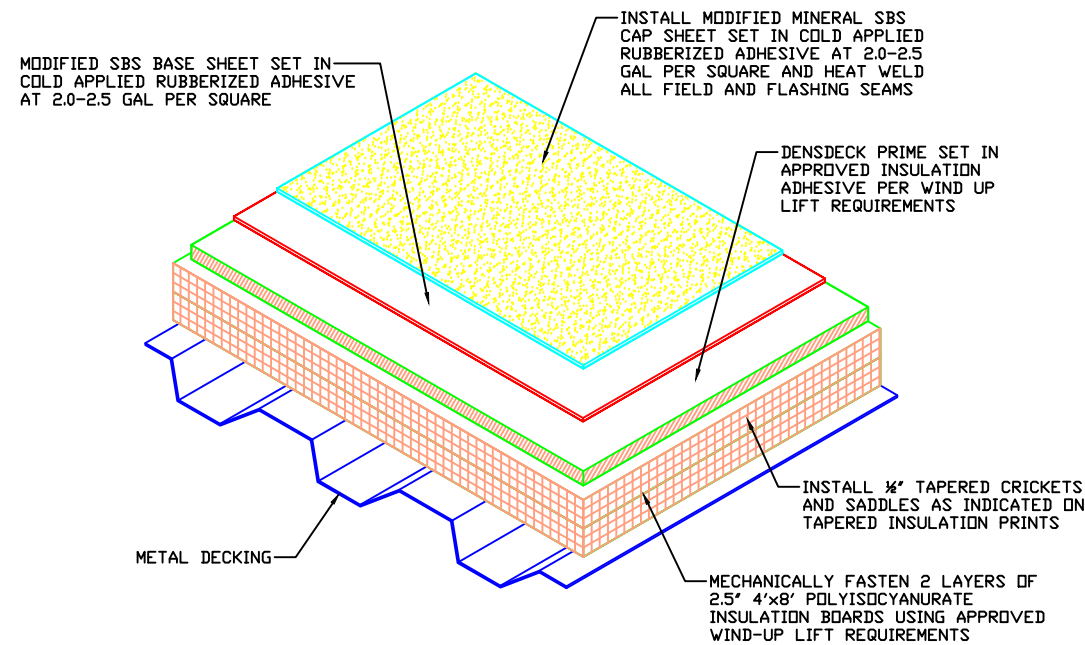
3800 EAST 91st STREET - CLEVELAND, OHIO 44105-2197
PHONE (800) 321-9336 / FAX (216) 641-0633



SCOTT C. MALONEY
COA: 18400768
LICENSE #: 001020039
EXPIRATION DATE:
11/30/2026

NOTE: This item has been digitally signed and sealed. Digital signatures must be verified on electronic files. Reproduced copies of digitally signed, dated, and sealed documents are not considered signed and sealed.

TYPICAL ROOF CROSS SECTION



GENERAL NOTES

GENERAL NOTES

- IT IS THE ROOFING CONTRACTOR'S RESPONSIBILITY TO FAMILIARIZE THEMSELVES WITH ALL DETAILS INVOLVED IN THE ROOFING CONTRACT.
- ALL DRAWINGS ARE GRAPHIC REPRESENTATION OF APPROXIMATE LOCATION OF EXISTING AND NEW MATERIALS. IT IS THE CONTRACTOR'S RESPONSIBILITY TO VERIFY ALL EXISTING CONDITIONS PRIOR TO COMMENCEMENT OF WORK.
- THE ROOFING CONTRACTOR TO PROTECT ALL ADJACENT SURFACES NOT SCHEDULED FOR WORK AND TO REPAIR ANY DAMAGED AREAS AS A RESULT OF CONTRACTOR WORK AT NO ADDITIONAL COST TO THE OWNER.
- THE ROOFING CONTRACTOR SHALL BE RESPONSIBLE TO MAINTAIN WATER TIGHTNESS AND PROVIDE PROTECTION AT ANY/ALL OPENINGS IN THE ROOF LEFT AT THE END OF EACH CONSTRUCTION DAY.
- ALL WOOD BLOCKING SHALL BE FIRE RATED.
- CONTRACTOR SHALL FIELD VERIFY ALL DIMENSIONS, CONDITIONS, AND QUANTITIES.
- STORE AND HANDLE ROOFING SHEETS IN A DRY, WELL-VENTILATED, WEATHER-TITE PLACE. STORE ROLLS OF MEMBRANE AND OTHER MATERIALS ON RAISED SURFACE. STAND ALL ROLL MATERIALS ON END. COVER ROLL GOODS WITH A CANVAS TARPULIN OR OTHER BREATHABLE MATERIAL (NOT POLYETHYLENE).
- DO NOT LEAVE UNUSED MATERIALS ON THE ROOF WHEN ROOFING WORK IS NOT IN PROGRESS UNLESS PROTECTED FROM WEATHER AND OTHER MOISTURE SOURCES.
- IT IS THE RESPONSIBILITY OF THE CONTRACTOR TO SECURE ALL MATERIAL AND EQUIPMENT ON THE JOB SITE. IF ANY MATERIAL OR EQUIPMENT IS STORED ON THE ROOF, THE CONTRACTOR MUST MAKE SURE THAT THE INTEGRITY OF THE DECK IS NOT COMPROMISED AT ANY TIME.

CUSTOMER NOTES

- ALL OF GARLAND'S SHOP FABRICATED MATERIAL WILL BE MANUFACTURED TO THE DIMENSIONS SHOWN, UNLESS OTHERWISE NOTED.
- IT IS ESSENTIAL THAT ANY NECESSARY CHANGES, NOTATIONS OR REQUESTED INFORMATION BE CLEARLY NOTED ON THE SHOP DRAWINGS.
- NO MATERIAL WILL BE CONSIDERED RELEASED FOR FABRICATION UNTIL ALL PERTINENT INFORMATION (I.E. COLOR, DIMENSIONS, MATERIAL CONFIGURATION) HAS BEEN RECEIVED.

SCOPE OF WORK

LAKE LAND COLLEGE - FIELD HOUSE - LOW SLOPE SOW

MINERAL MODIFIED BITUMEN ROOF REPLACEMENT: (METAL DECK STRUCTURALLY SLOPED)

- REMOVE EXISTING ROOF DOWN TO DECK AND DISPOSE OF ACCORDING TO ALL LOCAL AND STATE GUIDELINES.
- MECHANICALLY ATTACH 2 LAYERS OF 2.5" POLYISOCYANURATE INSULATION PER SPECIFICATION, USING APPROVED WIND-UP LIFT REQUIREMENTS.
- INSTALL 1/2" -12 TAPERED CRICKETS AND SADDLES AS INDICATED ON TAPERED INSULATION PRINTS.
- INSTALL 1/2" PRIMED DENS-DECK SET IN APPROVED INSULATION ADHESIVE PER WIND UP LIFT REQUIREMENTS.
- INSTALL MODIFIED SBS BASE SHEET SET IN COLD APPLIED RUBBERIZED ADHESIVE AT 2.0-2.5 GAL PER SQUARE.
- INSTALL MODIFIED MINERAL SBS CAP SHEET SET IN COLD APPLIED RUBBERIZED ADHESIVE AT 2.0-2.5 GAL PER SQUARE AND HEAT WELD ALL FIELD AND FLASHING SEAMS.
- FLASHINGS SHALL CONSIST OF:
 - SBS MODIFIED BASE SHEET SET IN COLD APPLIED FLASHING ADHESIVE AT 5 GAL PER SQUARE.
 - SBS MODIFIED MINERAL CAP SHEET SET IN COLD APPLIED FLASHING ADHESIVE AT 5 GAL PER SQUARE AND HEAT WELD ALL VERTICAL SEAMS.
 - THREE-COURSE INSIDE AND OUTSIDE CORNERS OF CURBS AND WALLS WITH APPROVED FLASHING ADHESIVE AND MESH.
- REPLACE CLAMPING RINGS AND STRAINERS ON DRAINS, MAKE SURE THEY ARE ALL PAINTED WITH RUSTOLEUM FIRE ENGINE RED SPRAY PAINT.
- ALL SOIL STACKS AND DRAINS SHALL RECEIVE NEW LEADS.
- SEE DRAWINGS FOR ALL METAL FLASHING DETAILS AND COMPONENTS.

DESIGN CRITERIA

WIND UPLIFT REQUIREMENTS: SECTION 1, 3, 7 (STEEL DECK)

- DESIGN CODE: ASCE 7-16 ASD
- EXPOSURE CATEGORY: C
- IMPORTANCE FACTOR: III, 1
- WIND SPEED: 114 MPH
- DESIGN ROOF HEIGHT: 15'
- MIN. BUILDING WIDTH: 220'
- ROOF SLOPE: 1/4 UNITS PER 12
- ROOF ANGLE: 1.19 DEG
- PARAPET ≤ 36" ENTIRE ROOF: NO
- BASE VELOCITY PRESSURE: 14.4 PSF
- ROOF TYPE: GABLE

EDGE ZONES:

- ZONE 1 WIDTH: 9'-0"
- ZONE 2 WIDTH: 9'-0"
- ZONE 3 WIDTH: 3'-0"
- ZONE 3 LENGTH: 9'-0"

ZONE PRESSURES:

- ZONE 1: 20.9 PSF
- ZONE 1: 32.4 PSF
- ZONE 2: 41.0 PSF
- ZONE 3: 54.0 PSF
- WALL PERIMETER ZONE 4: 23.8 PSF
- WALL CORNER ZONE 5: 28.1 PSF

ANSI/SPRI ES-1 COPING PRELIMINARY DESIGN

PROJECT DATA

- DESIGN WIND SPEED: 114 MPH
- ROOF EAVE HEIGHT: 15.00 FEET
- TALLEST PARAPET: 5.00 FEET
- METAL EDGE HEIGHT: 20.00 FEET
- EXPOSURE CATEGORY: C
- IMPORTANCE CLASSIFICATION: III

DESIGN WIND PRESSURE FM 1-28 ASD

- BASIC VELOCITY PRESSURE: 15.30 PSF
- HORIZONTAL DESIGN PRESSURE: 29.84 PSF
- VERT. DESIGN PRESSURE: 57.39 PSF

ES-1 TESTED COPING SYSTEM

- PRODUCT DESIGNATION: ES-C24-16-60-16
- SYSTEM DESCRIPTION: R-MER EDGE SNAP ON COPING 16" X 24 GA W/ 16 GA ANCHOR CHAIRS AT 60" O.C.
- MAXIMUM TESTED FRONT LOAD: 74.4 PSF
- MAX. VERTICAL FRONT DIM.: 6 INCHES
- MAXIMUM TESTED TOP LOAD: 160 PSF
- MAX. VERTICAL WIDTH: 16.00 INCHES
- MAXIMUM TESTED REAR LOAD: 93.9 PSF
- MAX. VERTICAL REAR DIM.: 4.00 INCHES

ANSI/SPRI ES-1 FASCIA PRELIMINARY DESIGN

PROJECT DATA

- DESIGN WIND SPEED: 114 MPH
- ROOF EAVE HEIGHT: 15.00 FEET
- TALLEST PARAPET: 5.00 FEET
- METAL EDGE HEIGHT: 20.00 FEET
- EXPOSURE CATEGORY: C
- IMPORTANCE CLASSIFICATION: III

DESIGN WIND PRESSURE ASCE 7-16 ASD

- BASIC VELOCITY PRESSURE: 15.30 PSF
- HORIZONTAL DESIGN PRESSURE: 29.84 PSF

ES-1 FASCIA LOAD

- VERTICAL FACE DIMENSION: 7.25 INCHES
- FASCIA DESIGN LOAD: 49.83 PSF

ES-1 TESTED FASCIA SYSTEM

- PRODUCT DESIGNATION: MEA-RMF-FASCIA725-Z24
- SYSTEM DESCRIPTION: R-MER FORCE FASCIA 7.25" X 24 GA. W/ RMEBF-700 BASE FRAME
- MAXIMUM TESTED LOAD: 320 PSF
- MAX. VERTICAL FACE DIM.: 7.25 INCHES

WIND UPLIFT REQUIREMENTS: SECTION 2, 6, 8 (STEEL DECK)

- DESIGN CODE: ASCE 7-16 ASD
- EXPOSURE CATEGORY: C
- IMPORTANCE FACTOR: III, 1
- WIND SPEED: 114 MPH
- DESIGN ROOF HEIGHT: 20'
- MIN. BUILDING WIDTH: 220'
- ROOF SLOPE: 1/4 UNITS PER 12
- ROOF ANGLE: 1.19 DEG
- PARAPET ≤ 36" ENTIRE ROOF: NO
- BASE VELOCITY PRESSURE: 15.3 PSF
- ROOF TYPE: GABLE

EDGE ZONES:

- ZONE 1 WIDTH: 12'-0"
- ZONE 2 WIDTH: 12'-0"
- ZONE 3 WIDTH: 4'-0"
- ZONE 3 LENGTH: 12'-0"

ZONE PRESSURES:

- ZONE 1: 22.2 PSF
- ZONE 1: 34.4 PSF
- ZONE 2: 43.6 PSF
- ZONE 3: 57.4 PSF
- WALL PERIMETER ZONE 4: 25.2 PSF
- WALL CORNER ZONE 5: 29.8 PSF

ANSI/SPRI ES-1 COPING PRELIMINARY DESIGN

PROJECT DATA

- DESIGN WIND SPEED: 114 MPH
- ROOF EAVE HEIGHT: 20.00 FEET
- TALLEST PARAPET: 0.00 FEET
- METAL EDGE HEIGHT: 20.00 FEET
- EXPOSURE CATEGORY: C
- IMPORTANCE CLASSIFICATION: III

DESIGN WIND PRESSURE FM 1-28 ASD

- BASIC VELOCITY PRESSURE: 15.30 PSF
- HORIZONTAL DESIGN PRESSURE: 29.84 PSF
- VERT. DESIGN PRESSURE: 57.39 PSF

ES-1 TESTED COPING SYSTEM

- PRODUCT DESIGNATION: ES-C24-16-60-16
- SYSTEM DESCRIPTION: R-MER EDGE SNAP ON COPING 16" X 24 GA W/ 24 GA ANCHOR CHAIRS AT 60" O.C.
- MAXIMUM TESTED FRONT LOAD: 74.4 PSF
- MAX. VERTICAL FRONT DIM.: 6 INCHES
- MAXIMUM TESTED TOP LOAD: 160 PSF
- MAX. VERTICAL WIDTH: 16.00 INCHES
- MAXIMUM TESTED REAR LOAD: 93.9 PSF
- MAX. VERTICAL REAR DIM.: 4.00 INCHES

ANSI/SPRI ES-1 FASCIA PRELIMINARY DESIGN

PROJECT DATA

- DESIGN WIND SPEED: 114 MPH
- ROOF EAVE HEIGHT: 20.00 FEET
- TALLEST PARAPET: 0.00 FEET
- METAL EDGE HEIGHT: 20.00 FEET
- EXPOSURE CATEGORY: C
- IMPORTANCE CLASSIFICATION: III

DESIGN WIND PRESSURE ASCE 7-16 ASD

- BASIC VELOCITY PRESSURE: 15.30 PSF
- HORIZONTAL DESIGN PRESSURE: 29.84 PSF

ES-1 FASCIA LOAD

- VERTICAL FACE DIMENSION: 7.25 INCHES
- FASCIA DESIGN LOAD: 49.83 PSF

ES-1 TESTED FASCIA SYSTEM

- PRODUCT DESIGNATION: MEA-RMF-FASCIA725-Z24
- SYSTEM DESCRIPTION: R-MER FORCE FASCIA 7.25" X 24 GA. W/ RMEBF-700 BASE FRAME
- MAXIMUM TESTED LOAD: 320 PSF
- MAX. VERTICAL FACE DIM.: 7.25 INCHES

REVISION:

LAKE LAND COLLEGE - FIELD HOUSE

5009 LAKE LAND BOULEVARD
MATTTOON, IL 61938

PROJECT NO: 30-ES-240237

GARLAND REP: REP NAME

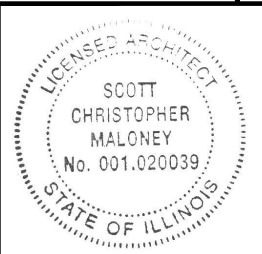
CHK BY:

DWG BY: FRB

DATE: 12/14/2024



GARLAND / DBS INC.
3800 EAST 91st STREET - CLEVELAND, OHIO 44105-2197
PHONE (800) 321-9536 / FAX (216) 641-0633



SCOTT C. MALONEY
COA: 18400768
LICENSE # : 001020039
EXPIRATION DATE:
11/30/2026

NOTE: This item has been digitally signed and sealed. Digital signatures must be verified on electronic files. Reproduced copies of digitally signed, dated, and sealed documents are not considered signed and sealed.

DESIGN CRITERIA

WIND UPLIFT REQUIREMENTS: SECTION 4 (STEEL DECK)

- DESIGN CODE: ASCE 7-16 ASD
- EXPOSURE CATEGORY: C
- IMPORTANCE FACTOR: III, 1
- WIND SPEED: 114 MPH
- DESIGN ROOF HEIGHT: 20'
- MIN. BUILDING WIDTH: 220'
- ROOF SLOPE: 1/4 UNITS PER 12
- ROOF ANGLE: 1.19 DEG
- PARAPET ≤ 36" ENTIRE ROOF: NO
- BASE VELOCITY PRESSURE: 15.3 PSF
- ROOF TYPE: GABLE

EDGE ZONES:

- ZONE 1 WIDTH: 12'-0"
- ZONE 2 WIDTH: 12'-0"
- ZONE 3 WIDTH: 4'-0"
- ZONE 3 LENGTH: 12'-0"

ZONE PRESSURES:

- ZONE 1: 22.2 PSF
- ZONE 1: 34.4 PSF
- ZONE 2: 43.6 PSF
- ZONE 3: 57.4 PSF
- WALL PERIMETER ZONE 4: 25.2 PSF
- WALL CORNER ZONE 5: 29.8 PSF

ANSI/SPRI ES-1 COPING PRELIMINARY DESIGN

PROJECT DATA

- DESIGN WIND SPEED: 114 MPH
- ROOF EAVE HEIGHT: 20.00 FEET
- TALLEST PARAPET: 2.00 FEET
- METAL EDGE HEIGHT: 22.00 FEET
- EXPOSURE CATEGORY: C
- IMPORTANCE CLASSIFICATION: III

DESIGN WIND PRESSURE FM 1-28 ASD

- BASIC VELOCITY PRESSURE: 15.61 PSF
- HORIZONTAL DESIGN PRESSURE: 30.45 PSF
- VERT. DESIGN PRESSURE: 58.55 PSF

ES-1 TESTED COPING SYSTEM

- PRODUCT DESIGNATION: ES-C24-16-60-16
- SYSTEM DESCRIPTION: R-MER EDGE SNAP ON
- COPING 16" X 24 GA W/ 24 GA ANCHOR CHAIRS AT 60" O.C.
- MAXIMUM TESTED FRONT LOAD: 74.4 PSF
- MAX. VERTICAL FRONT DIM.: 6 INCHES
- MAXIMUM TESTED TOP LOAD: 160 PSF
- MAX. VERTICAL WIDTH: 16.00 INCHES
- MAXIMUM TESTED REAR LOAD: 93.9 PSF
- MAX. VERTICAL REAR DIM.: 4.00 INCHES

ANSI/SPRI ES-1 FASCIA PRELIMINARY DESIGN

PROJECT DATA

- DESIGN WIND SPEED: 114 MPH
- ROOF EAVE HEIGHT: 20.00 FEET
- TALLEST PARAPET: 2.00 FEET
- METAL EDGE HEIGHT: 22.00 FEET
- EXPOSURE CATEGORY: C
- IMPORTANCE CLASSIFICATION: III

DESIGN WIND PRESSURE ASCE 7-16 ASD

- BASIC VELOCITY PRESSURE: 15.61 PSF
- HORIZONTAL DESIGN PRESSURE: 30.45 PSF

ES-1 FASCIA LOAD

- VERTICAL FACE DIMENSION: 7.25 INCHES
- FASCIA DESIGN LOAD: 50.84 PSF

ES-1 TESTED FASCIA SYSTEM

- PRODUCT DESIGNATION: MEA-RMF-FASCIA725-Z24
- SYSTEM DESCRIPTION: R-MER FORCE FASCIA 7.25" X 24 GA.
- W/ RMEBF-700 BASE FRAME
- MAXIMUM TESTED LOAD: 320 PSF
- MAX. VERTICAL FACE DIM.: 7.25 INCHES

WIND UPLIFT REQUIREMENTS: SECTION 5 (STEEL DECK)

- DESIGN CODE: ASCE 7-16 ASD
- EXPOSURE CATEGORY: C
- IMPORTANCE FACTOR: III, 1
- WIND SPEED: 114 MPH
- DESIGN ROOF HEIGHT: 15'
- MIN. BUILDING WIDTH: 220'
- ROOF SLOPE: 1/4 UNITS PER 12
- ROOF ANGLE: 1.19 DEG
- PARAPET ≤ 36" ENTIRE ROOF: NO
- BASE VELOCITY PRESSURE: 14.4 PSF
- ROOF TYPE: GABLE

EDGE ZONES:

- ZONE 1 WIDTH: 9'-0"
- ZONE 2 WIDTH: 9'-0"
- ZONE 3 WIDTH: 3'-0"
- ZONE 3 LENGTH: 9'-0"

ZONE PRESSURES:

- ZONE 1: 20.9 PSF
- ZONE 1: 32.4 PSF
- ZONE 2: 41.0 PSF
- ZONE 3: 54.0 PSF
- WALL PERIMETER ZONE 4: 23.8 PSF
- WALL CORNER ZONE 5: 28.1 PSF

ANSI/SPRI ES-1 COPING PRELIMINARY DESIGN

PROJECT DATA

- DESIGN WIND SPEED: 114 MPH
- ROOF EAVE HEIGHT: 15.00 FEET
- TALLEST PARAPET: 6.00 FEET
- METAL EDGE HEIGHT: 21.00 FEET
- EXPOSURE CATEGORY: C
- IMPORTANCE CLASSIFICATION: III

DESIGN WIND PRESSURE FM 1-28 ASD

- BASIC VELOCITY PRESSURE: 15.46 PSF
- HORIZONTAL DESIGN PRESSURE: 30.15 PSF
- VERT. DESIGN PRESSURE: 57.98 PSF

ES-1 TESTED COPING SYSTEM

- PRODUCT DESIGNATION: ES-C24-16-60-16
- SYSTEM DESCRIPTION: R-MER EDGE SNAP ON
- COPING 16" X 24 GA W/ 16 GA ANCHOR CHAIRS AT 60" O.C.
- MAXIMUM TESTED FRONT LOAD: 74.4 PSF
- MAX. VERTICAL FRONT DIM.: 6 INCHES
- MAXIMUM TESTED TOP LOAD: 160 PSF
- MAX. VERTICAL WIDTH: 16.00 INCHES
- MAXIMUM TESTED REAR LOAD: 93.9 PSF
- MAX. VERTICAL REAR DIM.: 4.00 INCHES

ANSI/SPRI ES-1 FASCIA PRELIMINARY DESIGN

PROJECT DATA

- DESIGN WIND SPEED: 114 MPH
- ROOF EAVE HEIGHT: 15.00 FEET
- TALLEST PARAPET: 6.00 FEET
- METAL EDGE HEIGHT: 21.00 FEET
- EXPOSURE CATEGORY: C
- IMPORTANCE CLASSIFICATION: III

DESIGN WIND PRESSURE ASCE 7-16 ASD

- BASIC VELOCITY PRESSURE: 15.46 PSF
- HORIZONTAL DESIGN PRESSURE: 30.15 PSF

ES-1 FASCIA LOAD

- VERTICAL FACE DIMENSION: 7.25 INCHES
- FASCIA DESIGN LOAD: 50.35 PSF

ES-1 TESTED FASCIA SYSTEM

- PRODUCT DESIGNATION: MEA-RMF-FASCIA725-Z24
- SYSTEM DESCRIPTION: R-MER FORCE FASCIA 7.25" X 24 GA.
- W/ RMEBF-700 BASE FRAME
- MAXIMUM TESTED LOAD: 320 PSF
- MAX. VERTICAL FACE DIM.: 7.25 INCHES

REVISION:

LAKE LAND COLLEGE - FIELD HOUSE

5009 LAKE LAND BOULEVARD
MATTTOON, IL 61938

PROJECT NO: 30-ES-240237

DATE: 12/14/2024

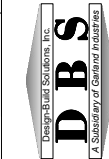
DWG BY: FRB

CHK BY:



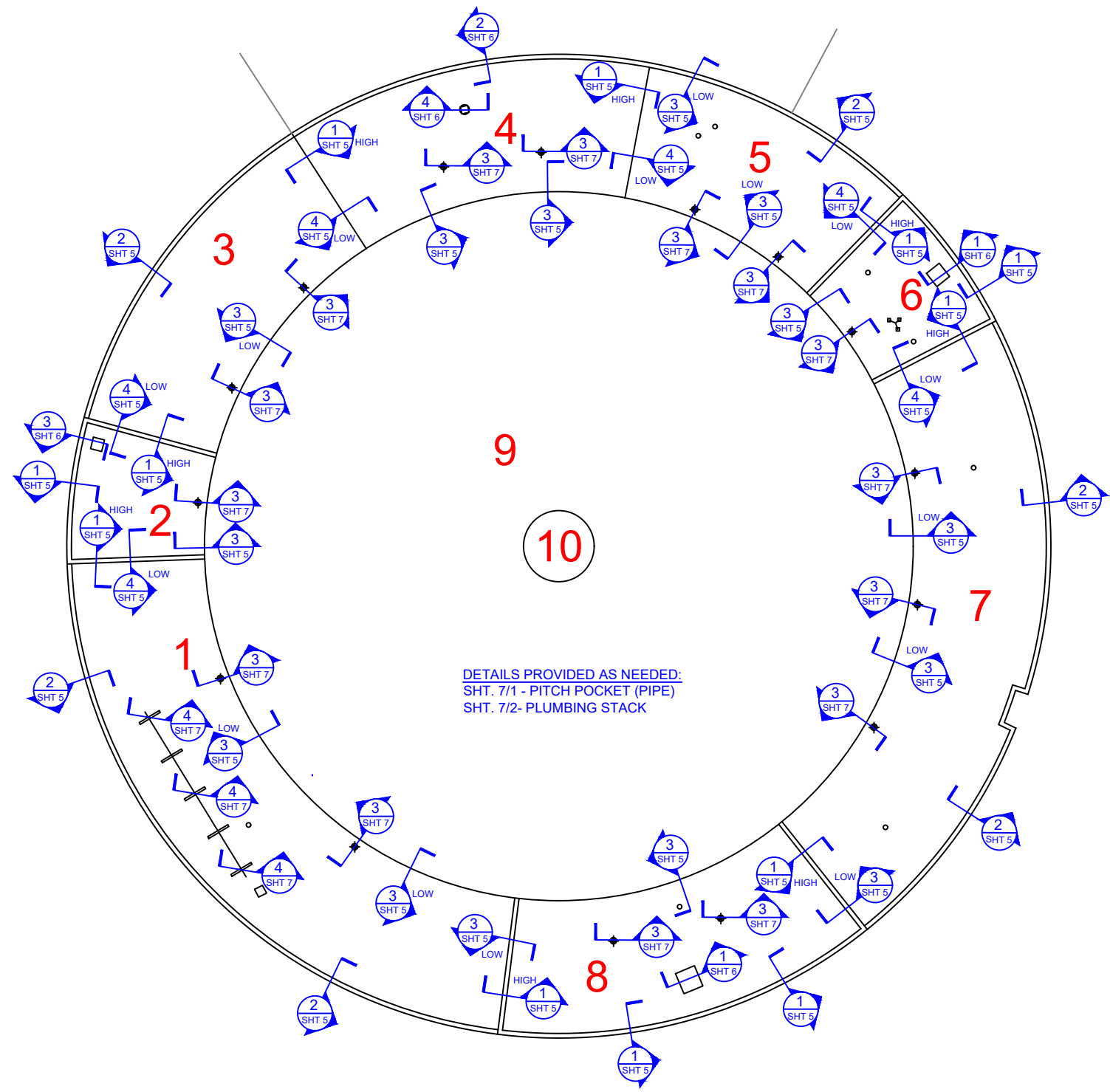
GARLAND / DBS INC.

3800 EAST 91st STREET - CLEVELAND, OHIO 44105-2197
PHONE (800) 321-9336 / FAX (216) 641-0633



SCOTT C. MALONEY
COA: 18400768
LICENSE #: 001020039
EXPIRATION DATE:
11/30/2026

NOTE: This item has been digitally signed and sealed. Digital signatures must be verified on electronic files. Reproduced copies of digitally signed, dated, and sealed documents are not considered signed and sealed.



DETAILS PROVIDED AS NEEDED:
 SHT. 7/1 - PITCH POCKET (PIPE)
 SHT. 7/2- PLUMBING STACK

1 ROOF PLAN
 SCALE: 1/32" = 1'-0"

NOTE:
 CONTRACTOR SHALL FIELD VERIFY ALL
 DIMENSIONS, CONDITIONS, AND QUANTITIES



SCOTT C. MALONEY
 COA: 18400768
 LICENSE #: 001020039
 EXPIRATION DATE:
 11/30/2026

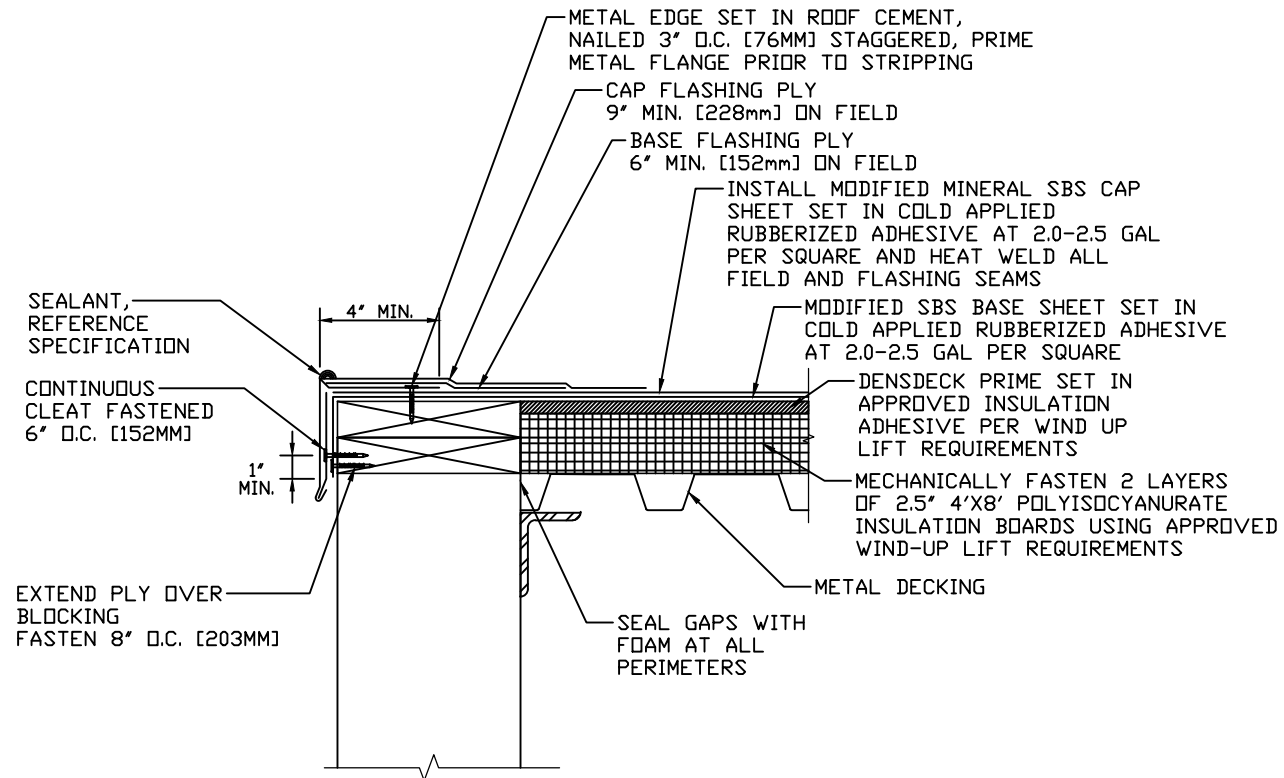
NOTE: This item has been digitally signed and sealed. Digital signatures must be verified on electronic files. Reproduced copies of digitally signed, dated, and sealed documents are not considered signed and sealed.

LAKE LAND COLLEGE - FIELD HOUSE
 5009 LAKE LAND BOULEVARD
 MATTOON, IL 61938

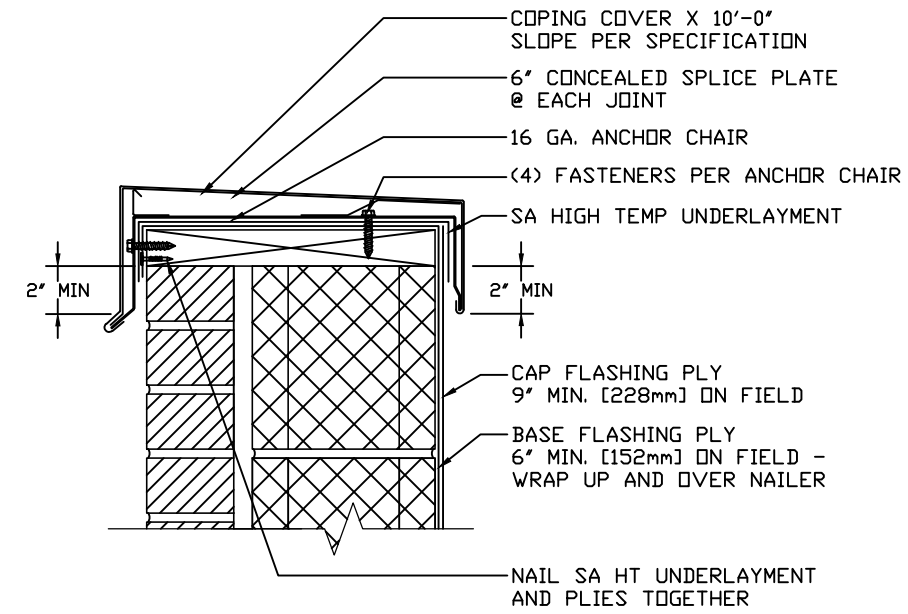
REVISION: _____ DATE: 12/14/2024 DWG BY: FRB CHK BY: _____
 GARLAND REP: REP NAME PROJECT NO: 30-ES-240237

GARLAND / DBS INC.
 3800 EAST 91st STREET - CLEVELAND, OHIO 44105-2197
 PHONE (800) 321-9336 / FAX (216) 641-0633

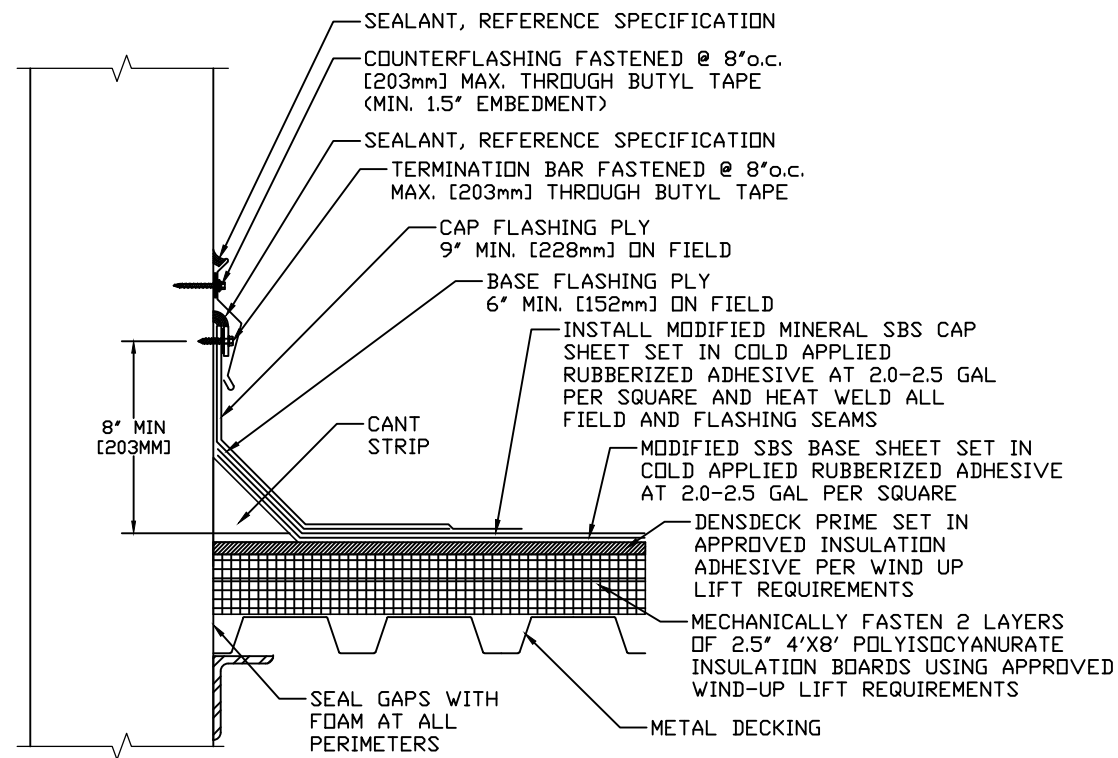




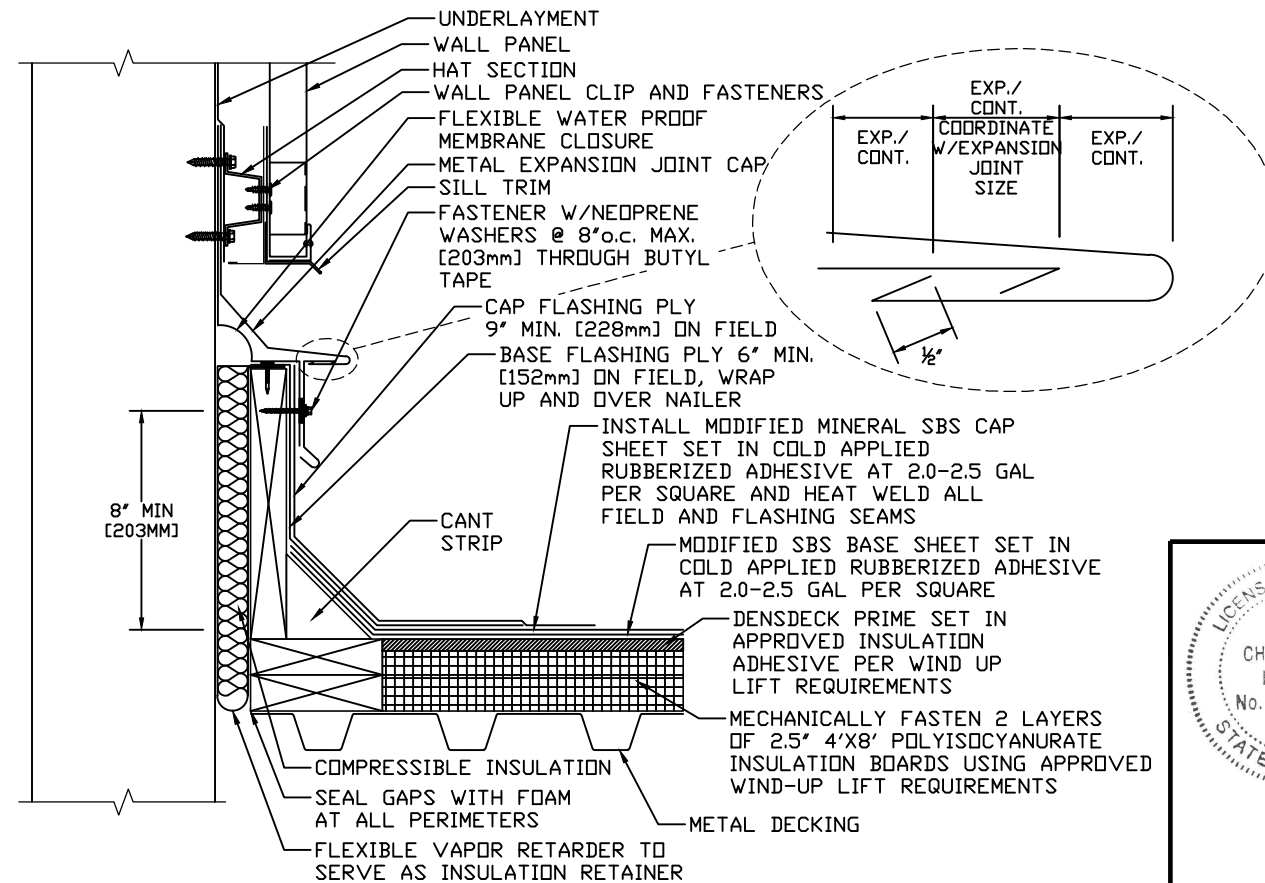
1 DRIP EDGE
SHT 5 SCALE: 1 1/2" =1'-0"



2 COPING CAP AT MASONRY WALL
SHT 5 SCALE: 1 1/2" =1'-0"



3 SURFACE MOUNTED COUNTERFLASHING
SHT 5 SCALE: 1 1/2" =1'-0"



4 EXPANSION JOINT AT WALL PANEL
SHT 5 SCALE: 1 1/2" =1'-0"

REVISION:



SCOTT C. MALONEY
COA: 18400768
LICENSE #: 001020039
EXPIRATION DATE:
11/30/2026

NOTE: This item has been digitally signed and sealed. Digital signatures must be verified on electronic files. Reproduced copies of digitally signed, dated, and sealed documents are not considered signed and sealed.

LAKE LAND COLLEGE - FIELD HOUSE
5009 LAKE LAND BOULEVARD
MATTTOON, IL 61938

GARLAND REP: REP NAME

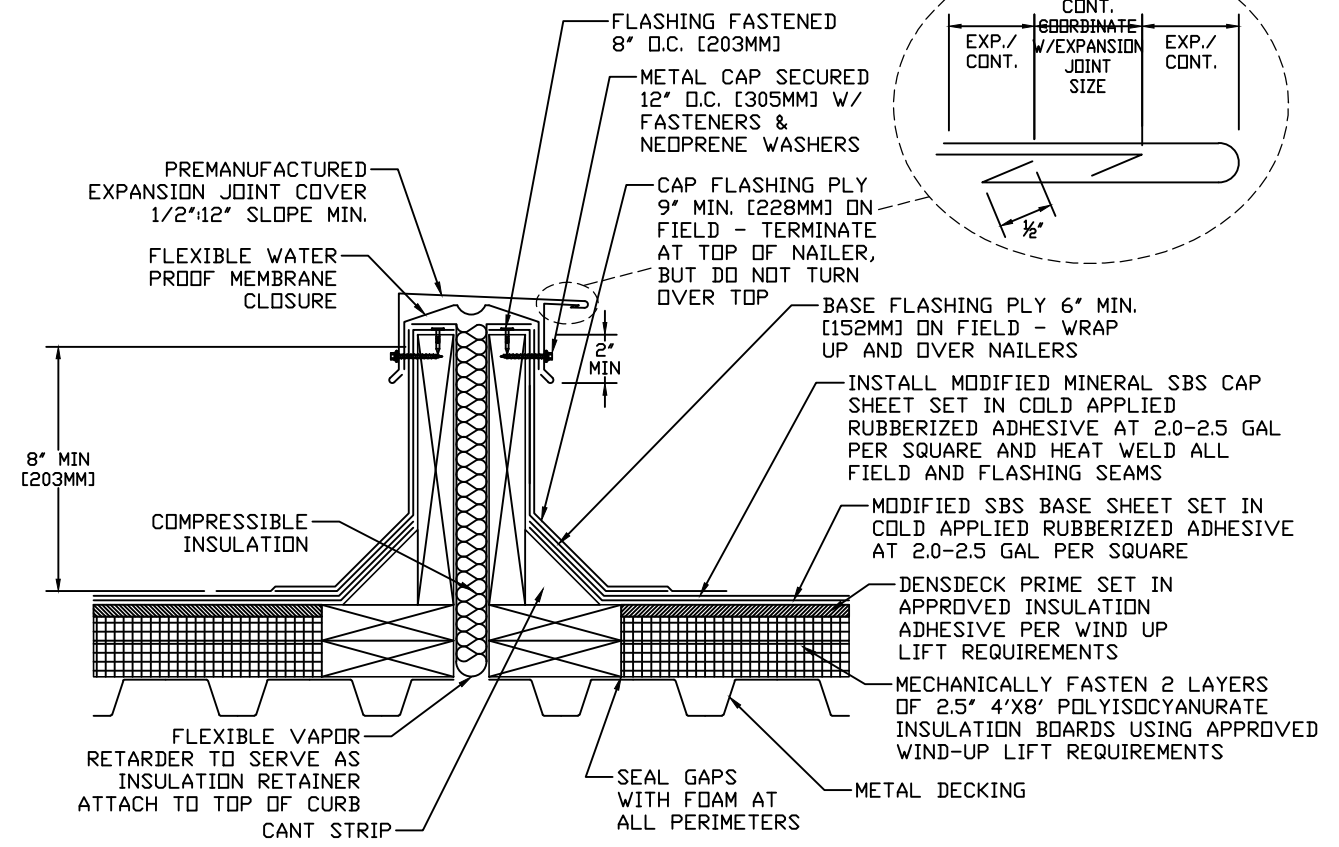
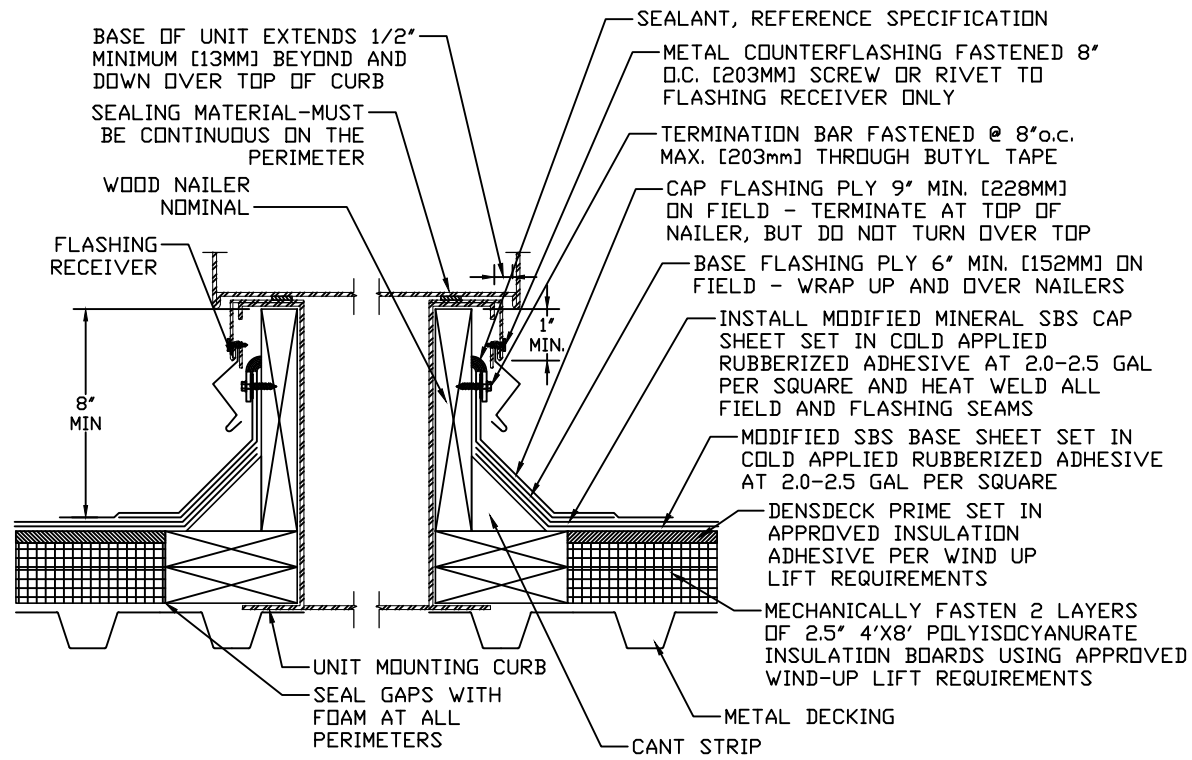
PROJECT NO: 30-ES-240237

DATE: 12/14/2024 DWG BY: FRB CHK BY:

GARLAND / DBS INC.

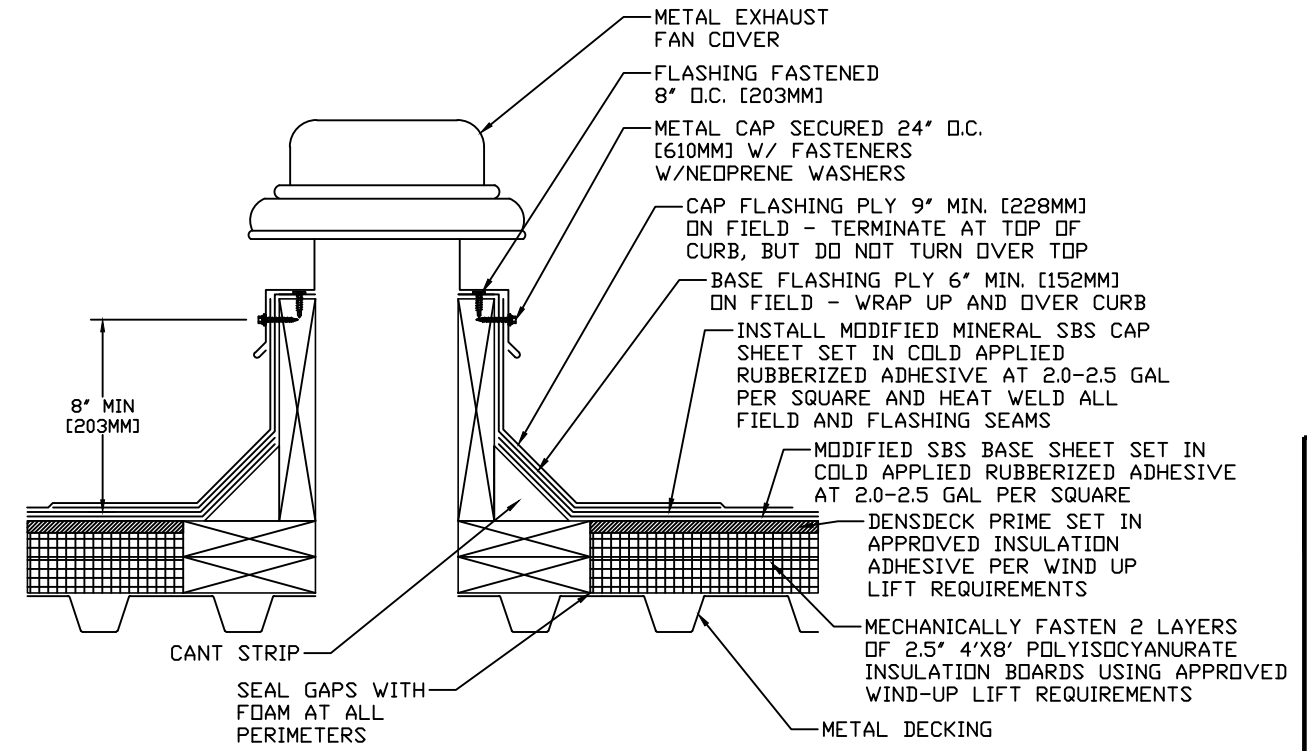
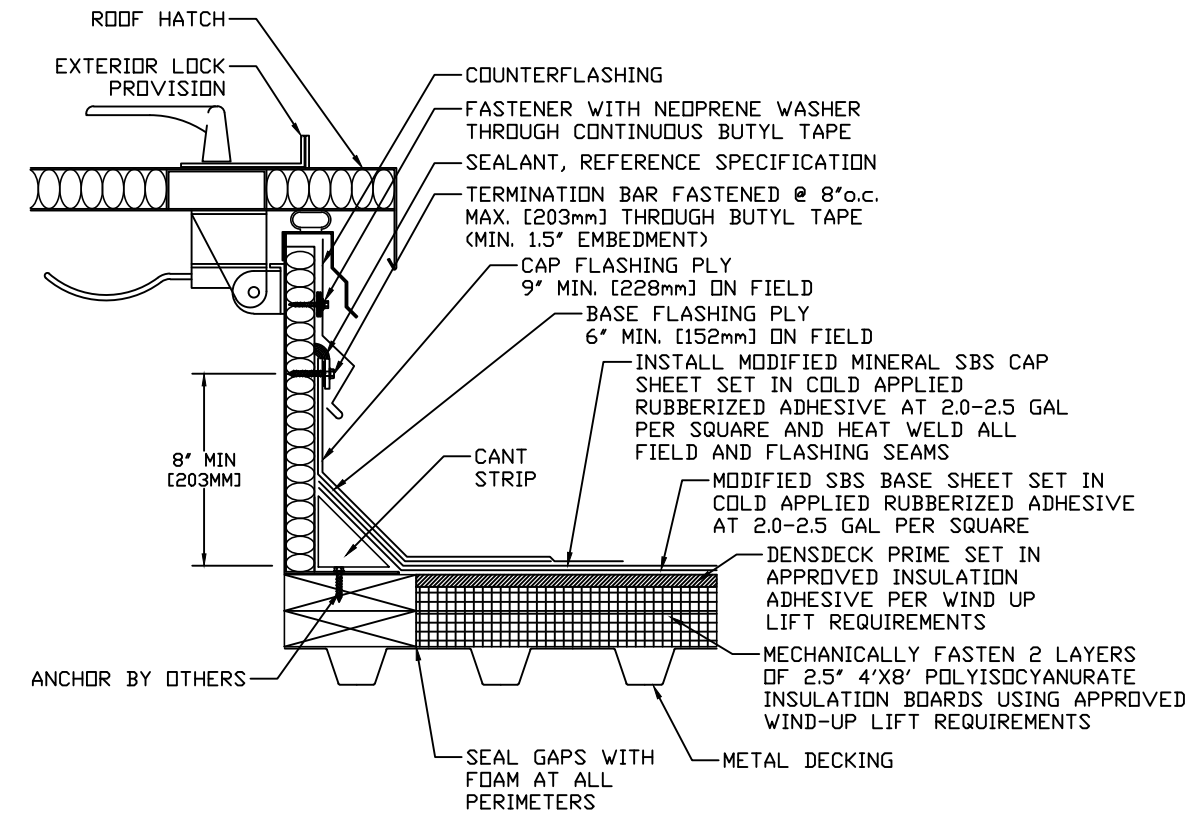
3800 EAST 91st STREET - CLEVELAND, OHIO 44105-2197
PHONE (800) 321-9336 / FAX (216) 641-0633





1 CURB DETAIL/AIR HANDLING STATION
 SHT 6 SCALE: 1 1/2" = 1'-0"

2 EXPANSION JOINT
 SHT 6 SCALE: 1 1/2" = 1'-0"



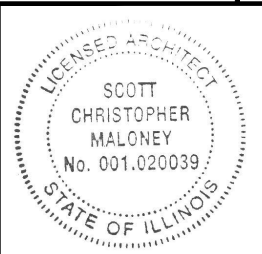
3 ROOF HATCH
 SHT 6 SCALE: 1 1/2" = 1'-0"

4 EXHAUST FAN
 SHT 6 SCALE: 1 1/2" = 1'-0"

LAKE LAND COLLEGE - FIELD HOUSE
 5009 LAKE LAND BOULEVARD
 MATTOON, IL 61938

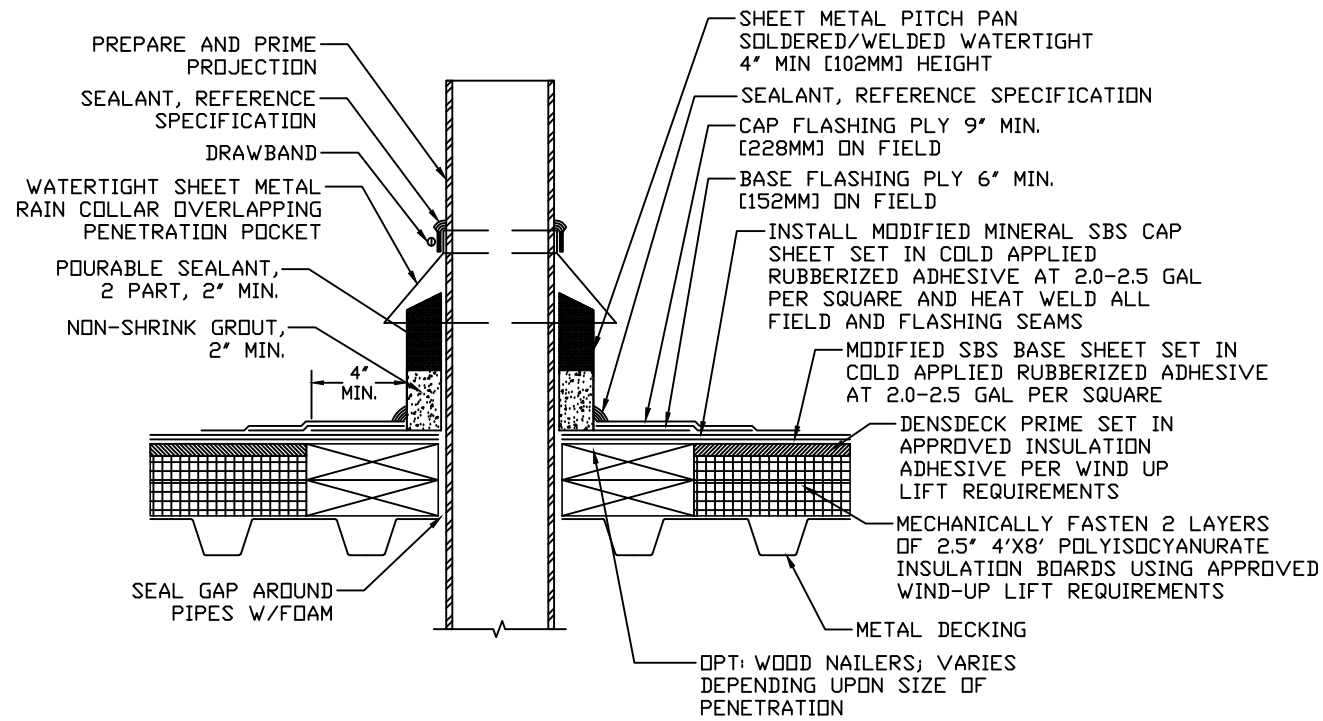
GARLAND REP: REP NAME PROJECT NO: 30-ES-240237 DATE: 12/14/2024 DWG BY: FRB CHK BY:

GARLAND / DBS INC.
 3800 EAST 91st STREET - CLEVELAND, OHIO 44105-2197
 PHONE (800) 321-9336 / FAX (216) 641-0633

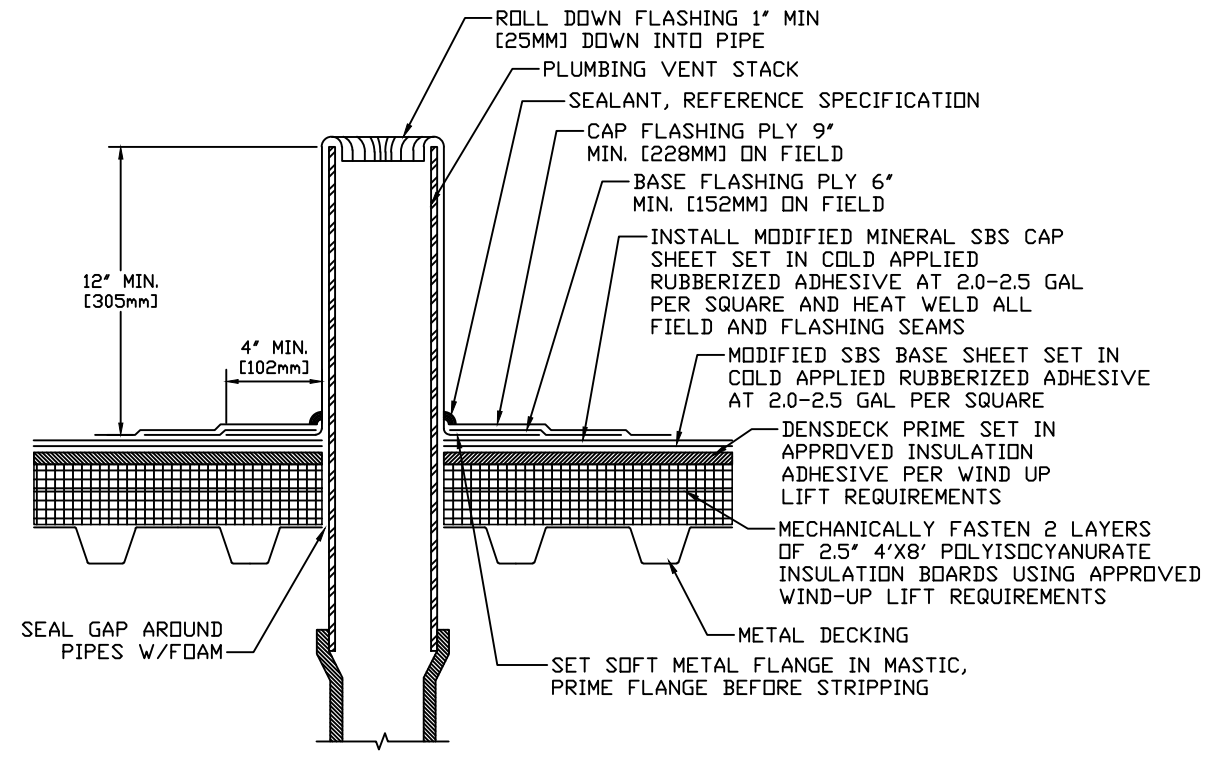


SCOTT C. MALONEY
 COA: 18400768
 LICENSE #: 001020039
 EXPIRATION DATE:
 11/30/2026

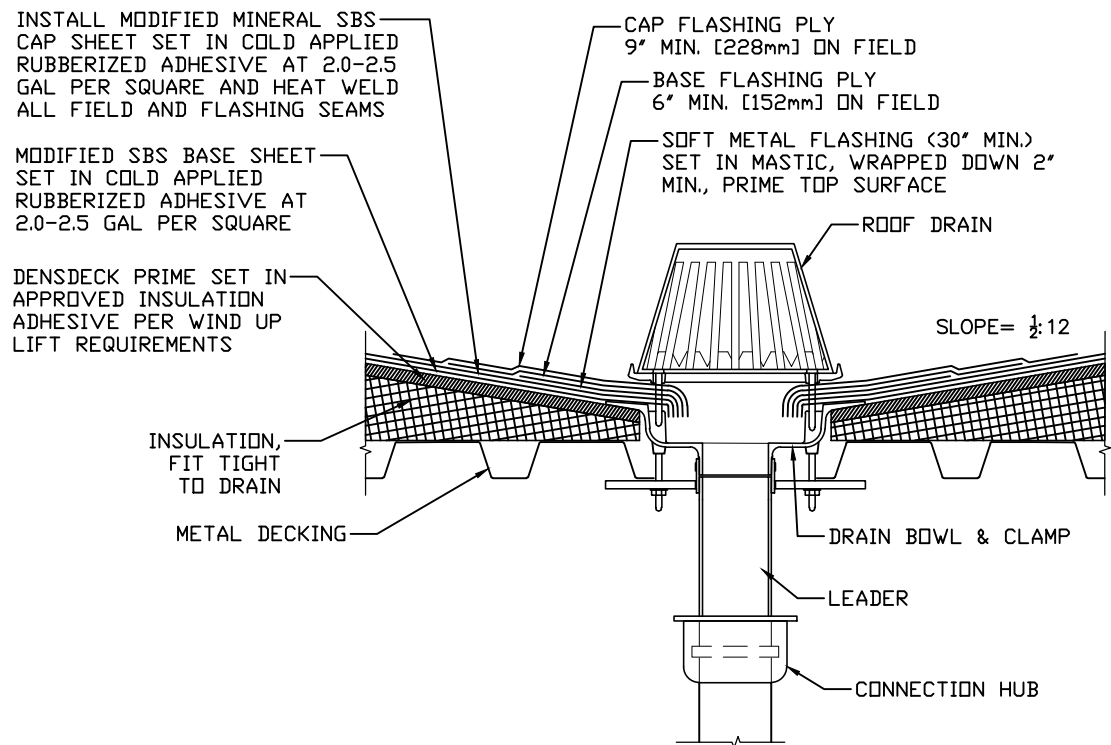
NOTE: This item has been digitally signed and sealed. Digital signatures must be verified on electronic files. Reproduced copies of digitally signed, dated, and sealed documents are not considered signed and sealed.



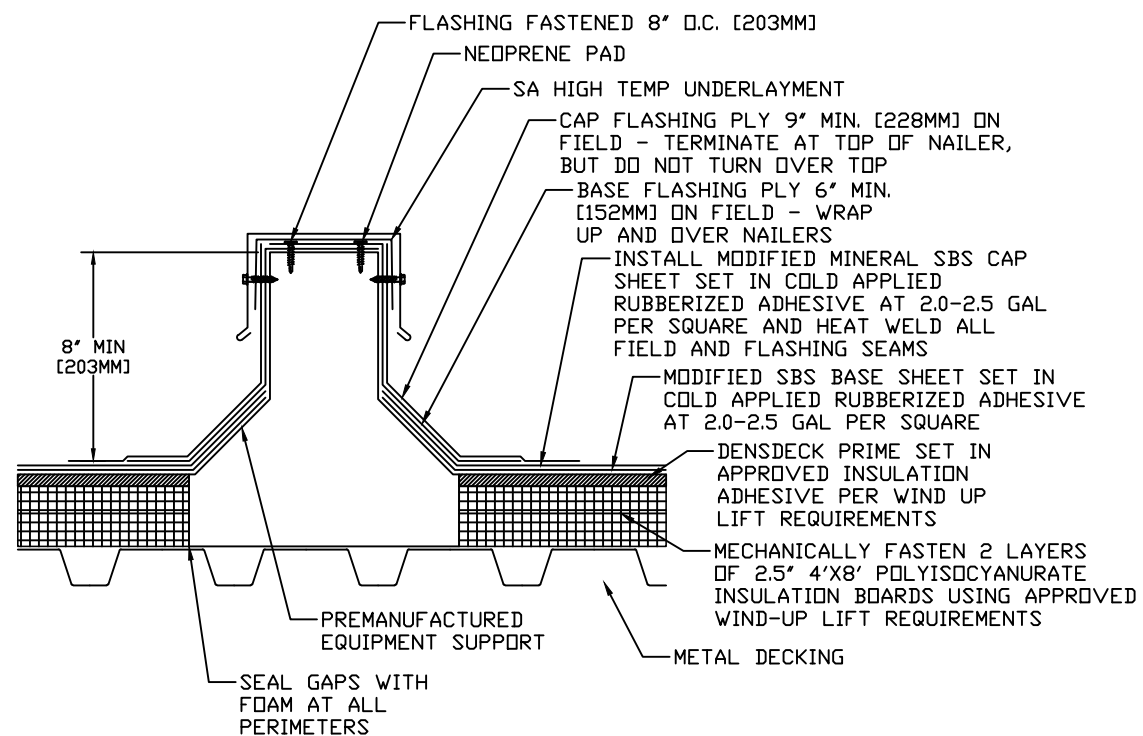
1 PITCH POCKET (PIPE)
SHT 7 SCALE: 1 1/2" = 1'-0"



2 PLUMBING STACK
SHT 7 SCALE: 1 1/2" = 1'-0"



3 ROOF DRAIN
SHT 7 SCALE: 1 1/2" = 1'-0"



4 RAIL CURB
SHT 7 SCALE: 1 1/2" = 1'-0"

REVISION:

LAKE LAND COLLEGE - FIELD HOUSE
5009 LAKE LAND BOULEVARD
MATTTOON, IL 61938

GARLAND REP: REP NAME

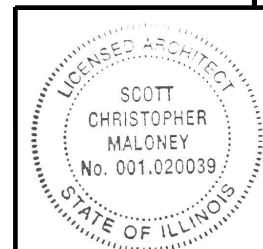
PROJECT NO: 30-ES-240237

DATE: 12/14/2024

CHK BY: FRB

GARLAND / DBS INC.

3800 EAST 91st STREET - CLEVELAND, OHIO 44105-2197
PHONE (800) 321-9336 / FAX (216) 641-0633



SCOTT C. MALONEY
COA: 18400768
LICENSE #: 001020039
EXPIRATION DATE:
11/30/2026

NOTE: This item has been digitally signed and sealed. Digital signatures must be verified on electronic files. Reproduced copies of digitally signed, dated, and sealed documents are not considered signed and sealed.